

6. Match the terms provided in Column B with the statements given in Column A. Place the correct letter response in the answer blanks.

Column A

- ___ 1. A recording of the electrical activity of the heart
- ___ 2. The period during which the atria are depolarizing
- ___ 3. The period during which the ventricles are repolarizing
- ___ 4. The period during which the ventricles are depolarizing, which precedes their contraction
- ___ 5. An abnormally slow heart beat; that is, below 60 beats per minute
- ___ 6. A condition in which the heart is uncoordinated and useless as a pump
- ___ 7. An abnormally rapid heart beat; that is, over 100 beats per minute
- ___ 8. Damage to the AV node, totally or partially releasing the ventricles from the control of the sinoatrial (SA) node
- ___ 9. Chest pain, resulting from ischemia of the myocardium

Column B

- A. Angina pectoris
- B. Bradycardia
- C. Electrocardiogram
- D. Fibrillation
- E. Heart block
- F. P wave
- G. QRS wave
- H. T wave
- I. Tachycardia

7. A portion of an electrocardiogram is shown in Figure 11-3. On the figure identify the QRS complex, the P wave, and the T wave. Then, using a red pencil, bracket a portion of the recording equivalent to the length of one cardiac cycle. Using a blue pencil, bracket a portion of the recording in which the *ventricles* would be in diastole.

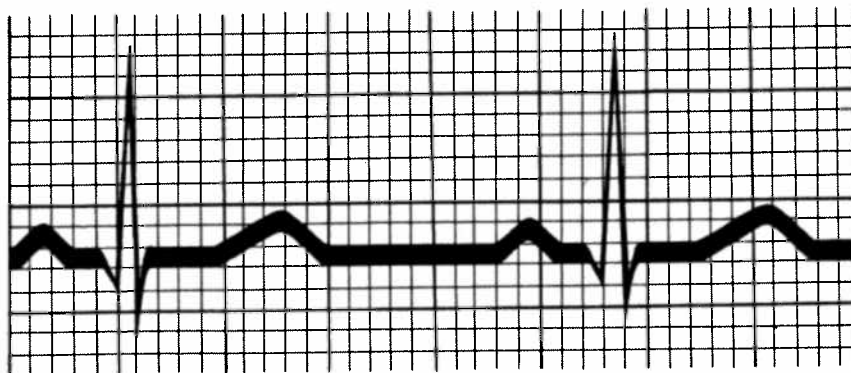


Figure 11-3